



## **1. IBIZA Collection**

### **Fabryka Mebli TARANKO Aleksander Taranko**

The IBIZA collection was created for customers who like exclusivity resulting from simple form. The individual selection of elements allows you to create any compositions, so the collection will work perfectly in any living room and dining room, while maintaining great appearance and high level of usability. Thanks to the combination of classic, modern and functional style, the furniture from this collection will perfectly complement both simple interiors and expressive ones dominated by intense colours and accessories.



## **2. AURA Collection**

### **FMHOFFER Sp. z o.o. Sp. k.**

Aura – A collection designed in the circular economy model: based on minimising production waste and optimising the production process, modular construction, without glue and connections that are difficult to separate, allows for easy refreshing or recycling, as well as the possibility of giving it a 'second life.' Its unique aesthetic is created by sophisticated simplicity, intriguing details discovered during use and rounded forms. It's not just furniture – it's an investment in durability and timeless style that remains fashionable for years.



### 3. AMORE COLORE Furniture Collection

#### HUBERTUS Design Sp. z o.o.

The AMORE COLORE collection includes several dozen furniture types, including functional coffee tables in various sizes, extendable tables with unconventional shapes and impressive chests of drawers. The rich colour range (navy blue, burgundy, green, cappuccino, cashmere, mint and blue) creates many unprecedented arrangement possibilities. The wide range of elements in this collection are made of the highest quality materials and equipped with the best furniture accessories from EU countries.



### 4. Kontur Talalay H2 Jedwab Mattress

#### M&K Foam Sp. z o.o. / M&K FOAM GmbH Sp. z o.o.

The Kontur Talalay H2 Jedwab mattress is an innovative solution for people who value the highest quality of sleep. Multi-layered, natural Talalay latex, precisely contour-cut, provides stable support and proper ventilation. The open-cell structure ensures optimal temperature regulation, and the mulberry silk in the cover guarantees adaptation to the ambient temperature, effectively wicks away moisture, maintaining a dry surface. The cover has a smooth, uniform structure and long fibres and is gently wrapped in leather. The combination of natural materials in the mattress ensures comfortable and healthy sleep.



### 5. NOOK Bed

#### COMFORTEO Węglowski i Stryjakiewicz Sp.k.

The NOOK bed was created according to the principle that beauty lies in simplicity and is the best proof that nature is an inexhaustible source of unique inspiration. Its shell-shaped headboard, decorated with vertical stripes, gives the furniture a unique character that attracts the eye and adds elegance to the interior. Touch-sensitive, built-in lights subtly illuminate the space, creating a cosy and relaxing atmosphere. The lightweight construction with slender legs fits harmoniously into a variety of arrangements. Additionally, a practical bedding container is an ideal solution for people who value functionality in a beautiful form.



## 6. OAHE Modular Furniture

### COMFORTEO Węglowski i Stryjakiewicz Sp.k.

OAHE modular furniture is a modern solution inspired by the latest interior design trends. The 18-module system allows you to create a variety of configurations, from compact sofas to expansive corner sofas, ideal for large spaces. Characteristic rounded edges, highlighted by thick trimming on the seats, backrests and cushions, give the form a subtle and modern look. Fixed backrest with loosely arranged cushions ensures comfort of use. Set low on the floor, the piece of furniture fits into the trend of low-profile structures, appreciated for their minimalist, functional character.



## 7. Vikam Kitchen Table

### Spółka Meblowa KAM Sp. j.

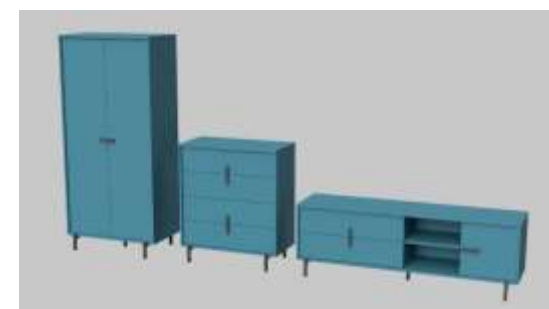
The Vikam kitchen table is an extendable table designed with kitchen spaces in mind. An innovative solution is its base, consisting of two frame modules with a stabilising support. This structure increases the durability of the table while allowing for a greater load on the tabletop. This solution is registered as a utility model in the EU and the Patent Office of the Republic of Poland. The table is prepared for self-assembly and for transport in packages.



## 8. Thinking Cabinets Cabinet Furniture System

### Thinking Cabinets Sp. z o.o.

The innovative Thinking Cabinets folding system for cabinet furniture is an original solution that combines functionality, aesthetics and simplicity of use. This product was created for users who value ease of installation and high quality of workmanship. The components of the connector system are: a connector with the CLICK system, a pin for the body, a pin for the drawer guide, a pin and a latch for mounting the rear wall. Thanks to the use of modular elements, furniture assembly does not require the use of additional tools or specialist knowledge. All body components are designed to fit together seamlessly, allowing for quick and easy assembly.



## 9. VELPA S Model

### Fabryka Mebli WERSAL Z.B.Ł. Kaczorowski SK

The VELPA model is an innovative piece of furniture that combines modern design with functionality. With electric seat extension, it perfectly adapts to the individual needs of users. The rounded line of the furniture gives it an elegant look that will fit into various interior styles.



## 10. MAXO Multimodal Upholstered Furniture System

### POLDEM Group/ STELLA Sp. z o. o

MAXO is a simple and elegant corner sofa whose rounded, oval shapes perfectly correspond with softness and compact dimensions. Its appearance is dignified, yet subtle, making it a harmonious addition to a variety of interiors. The high legs add lightness to the entire structure, emphasising the originality and class of this model. The Maxo corner sofa is a guarantee of the highest comfort, which brings relief after a hard day. It is the result of precisely refined ergonomics of the structure, as well as the use of the highest quality foams and silicone fillings, thanks to which ideal softness and comfort have been achieved. The universal, light form and appropriate ergonomics make Maxo the perfect choice for those who value elegance and comfort in one.



## 11. NOXID Multimodal Upholstered Furniture System

### POLDEM Group/ STELLA Sp. z o. o

NOXID is a line of modular program of simple monolithic shapes arranged in any style. The gentle lines of the seats, backrests and the shape of the armrest suggest to the user to expect high comfort, which is indeed the main attribute of this collection. Absolutely above-average comfort is the result of using spacious, deep and soft seats made of the best 'Memory' foam fillings. The available modules and the way they are connected provide the ability to freely shape various spatial compositions at any stage of use, e.g. we can change the arrangement of furniture before a meeting with friends. A concept also created to provide freedom in fabric and colour selection. This solution not only highlights the originality of the design itself, but primarily it is intended to give the effect of sublime visual harmony with the interior characterised by diverse colours.

